

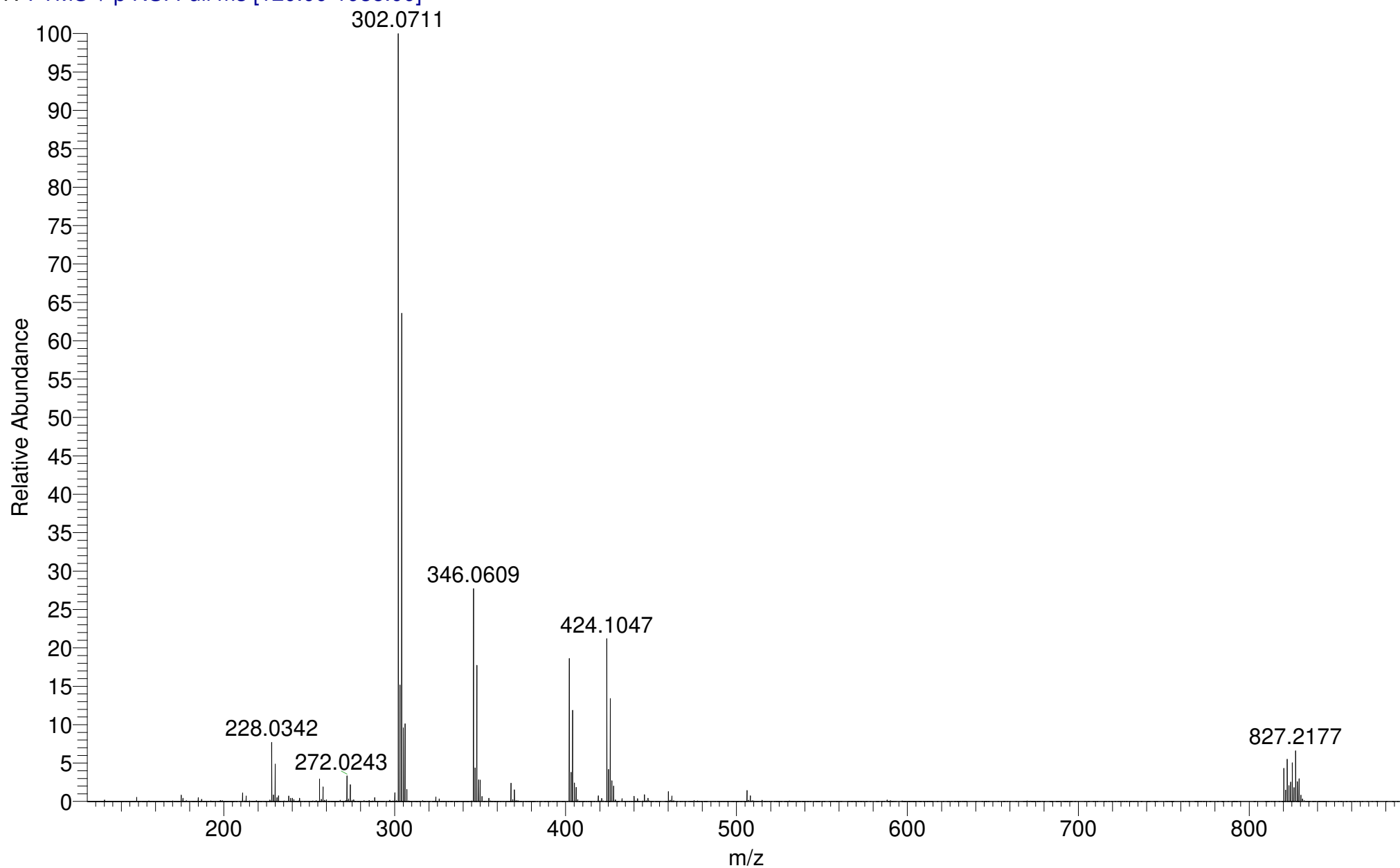
AB3-325
(DCM)/MeOH + NH₄OAc
C₁₉H₂₅Cl₂NO₄

EPSRC National Facility Swansea
LTQ Orbitrap XL

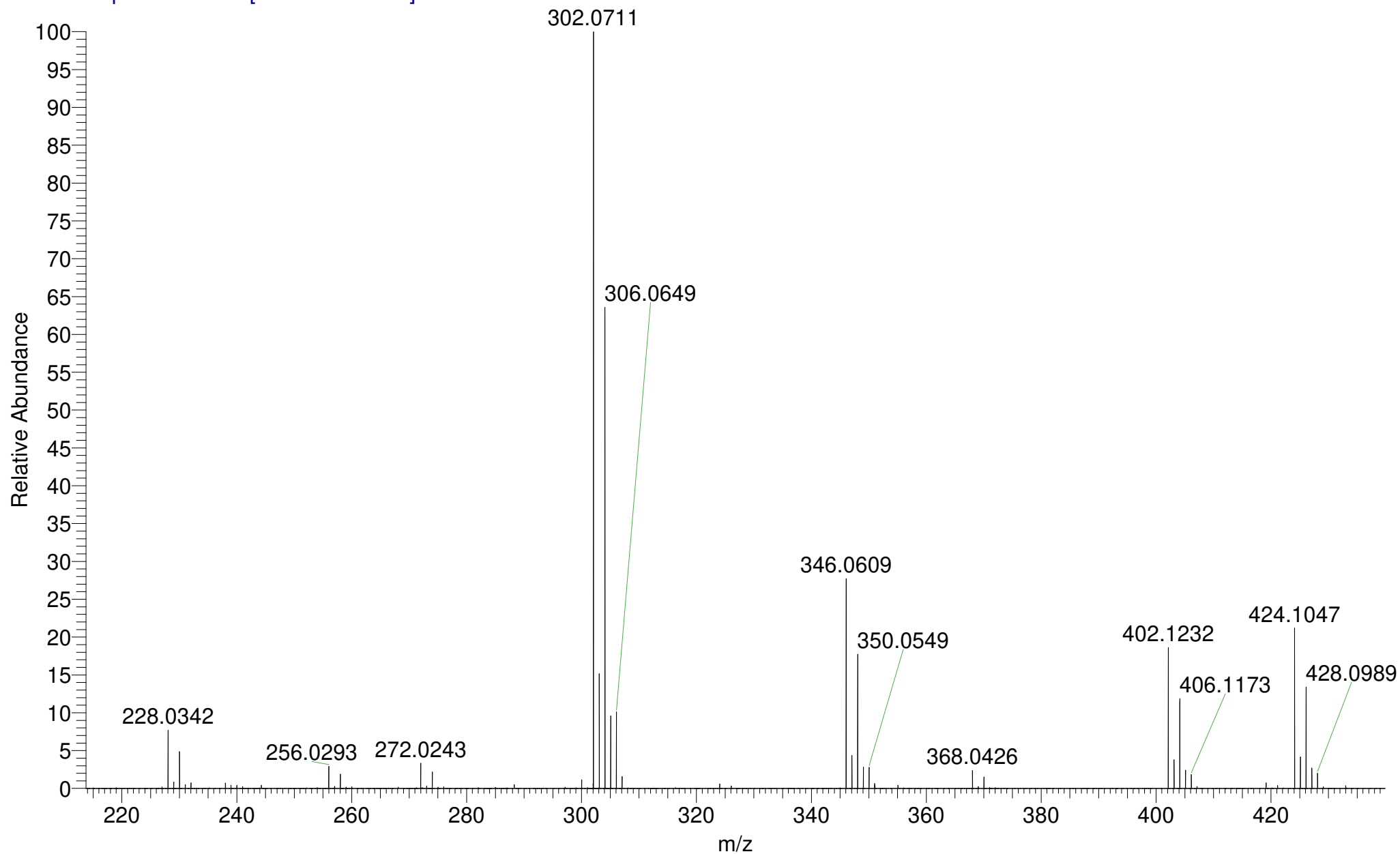
IMPBUL-AJB
22/02/2018 17:09:58

IMPBUL_CM93U_42208 #33-40 RT: 0.74-1.01 AV: 6 SM: 7G NL: 3.57E7

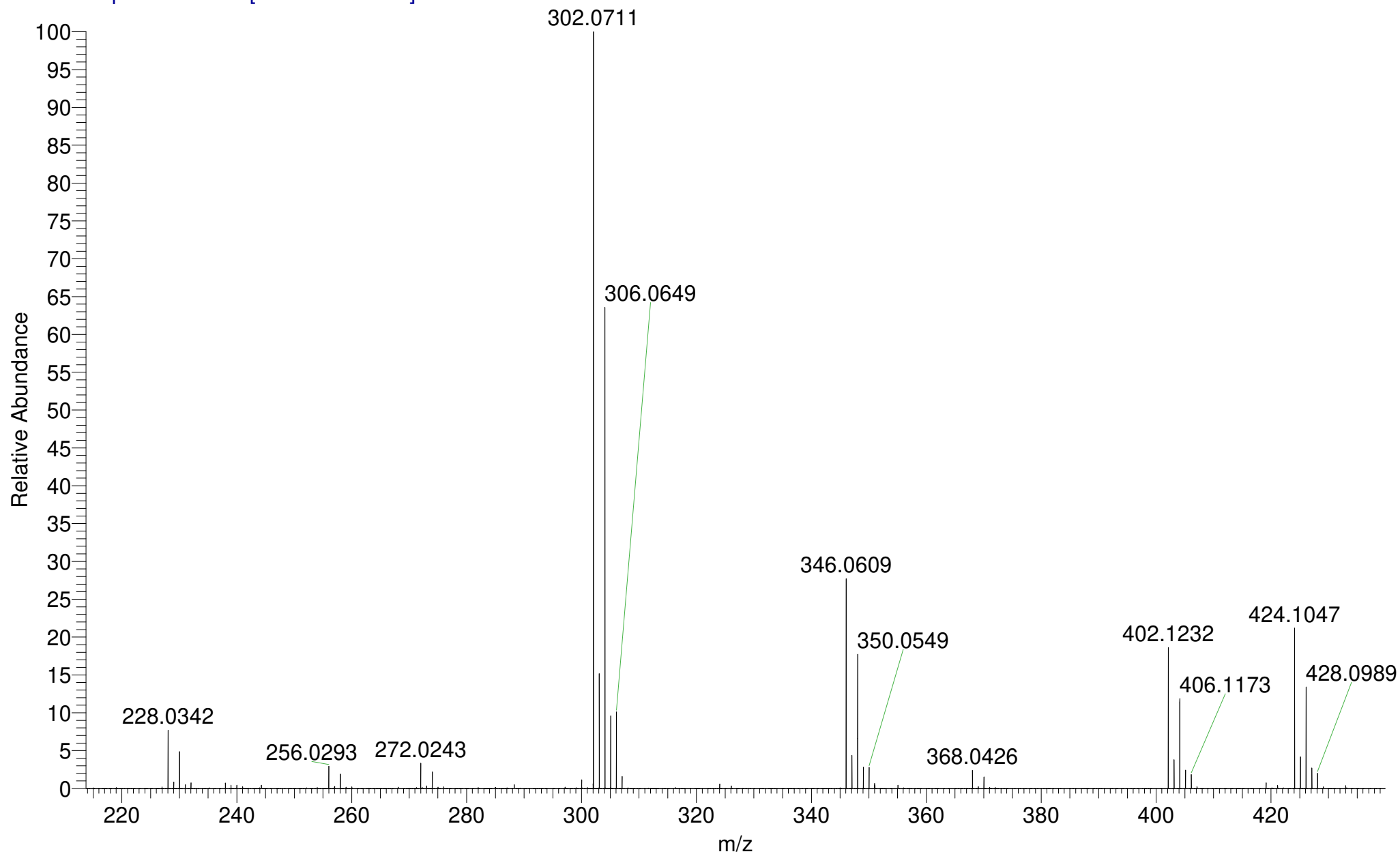
T: FTMS + p NSI Full ms [120.00-1935.00]

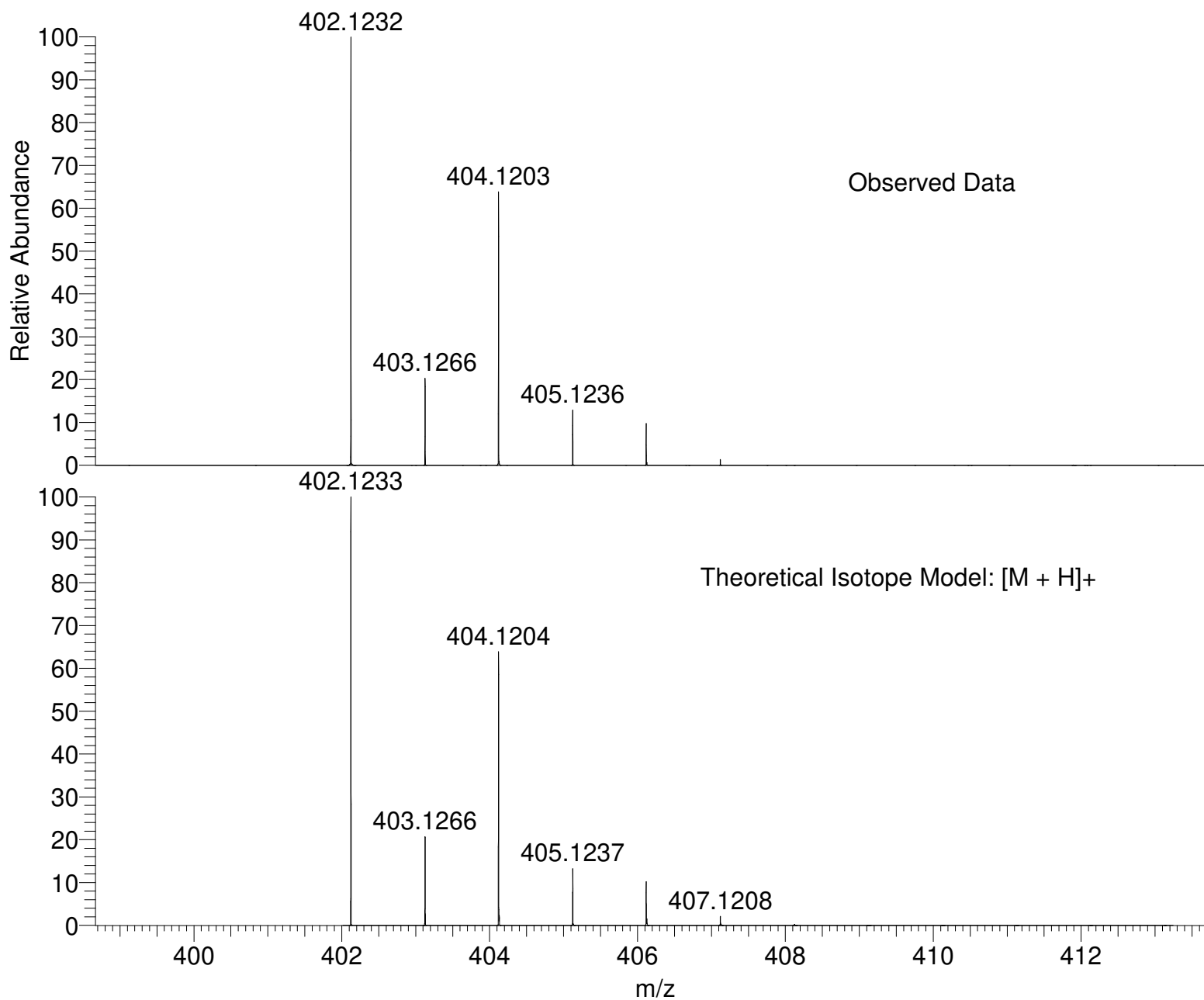


IMPBUL_CM93U_42208 #33-40 RT: 0.74-1.01 AV: 6 SM: 7G NL: 3.57E7
T: FTMS + p NSI Full ms [120.00-1935.00]



IMPBUL_CM93U_42208 #33-40 RT: 0.74-1.01 AV: 6 SM: 7G NL: 3.57E7
T: FTMS + p NSI Full ms [120.00-1935.00]





NL:
6.65E6
IMPBUL_CM93U_42208#33-
40 RT: 0.74-1.01 AV: 6 T:
FTMS + p NSI Full ms
[120.00-1935.00]

NL:
1.08E4
C₁₉H₂₅Cl₂NO₄H:
C₁₉H₂₆Cl₂N₁O₄
p (gss, s /p:40) Chrg 1
R: 100000 Res .Pwr . @FWHM

Isotope: Min. .. Max.
 14 N 0....15
 16 O 0....15
 12 C 0....80
 1 H 0....90
 23 Na 0....0
 35 Cl 0....2
 Tolerance Window: +- 5.00 ppm
 Db/Ring Equiv: -3.. 100
 Fits: 150

N-Rule: Do not use
 Charge: 1

Mass	Theoretical Mass	Delta [ppm]	RDB	Composition
402.1232	402.1233	-0.3	6.5	C ₁₉ H ₂₆ O ₄ N ₁ Cl ₂
	402.1234	-0.4	4.0	C ₇ H ₁₉ O ₆ N ₁₂ Cl ₁
	402.1234	-0.4	-1.5	C ₈ H ₂₅ O ₁₁ N ₅ Cl ₁
	402.1229	0.8	3.0	C ₁₁ H ₂₂ O ₁₂ N ₄
	402.1229	0.8	8.5	C ₁₀ H ₁₆ O ₇ N ₁₁
	402.1229	0.9	11.0	C ₂₂ H ₂₃ O ₅ Cl ₁
	402.1228	0.9	16.5	C ₂₁ H ₁₇ N ₇ Cl ₁
	402.1237	-1.3	20.5	C ₂₆ H ₁₆ O ₂ N ₃
	402.1238	-1.6	-0.5	C ₄ H ₂₂ O ₅ N ₁₃ Cl ₂
	402.1224	2.1	21.0	C ₂₄ H ₁₄ O ₁ N ₆
	402.1242	-2.5	16.0	C ₂₃ H ₁₉ O ₁ N ₄ Cl ₁
	402.1242	-2.5	13.5	C ₁₁ H ₁₂ O ₃ N ₁₅
	402.1242	-2.5	8.0	C ₁₂ H ₁₈ O ₈ N ₈
	402.1242	-2.5	2.5	C ₁₃ H ₂₄ O ₁₃ N ₁
	402.1220	2.9	-1.0	C ₆ H ₂₃ O ₁₀ N ₈ Cl ₁
	402.1220	3.0	4.5	C ₅ H ₁₇ O ₅ N ₁₅ Cl ₁
	402.1220	3.0	7.0	C ₁₇ H ₂₄ O ₃ N ₄ Cl ₂
	402.1247	-3.7	11.5	C ₂₀ H ₂₂ N ₅ Cl ₂
	402.1247	-3.7	3.5	C ₉ H ₂₁ O ₇ N ₉ Cl ₁
	402.1247	-3.7	-2.0	C ₁₀ H ₂₇ O ₁₂ N ₂ Cl ₁
	402.1215	4.2	3.5	C ₉ H ₂₀ O ₁₁ N ₇
	402.1215	4.2	9.0	C ₈ H ₁₄ O ₆ N ₁₄
	402.1215	4.2	11.5	C ₂₀ H ₂₁ O ₄ N ₃ Cl ₁
	402.1250	-4.6	20.0	C ₂₈ H ₁₈ O ₃
	402.1252	-4.9	-1.0	C ₆ H ₂₄ O ₆ N ₁₀ Cl ₂